

Programmable Logic Controller – PLC

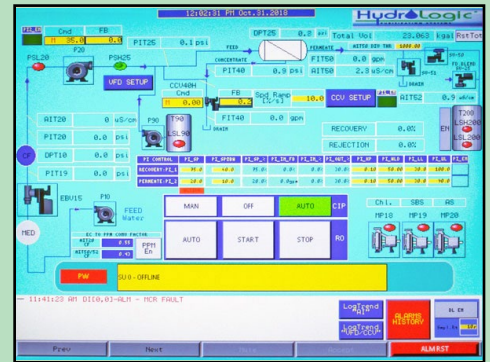
- Completely automates RO operation. The PLC utilizes multiple flow meters, pressure gauges, temperature probes, and TDS meters, to constantly adjust the system to perform as efficiently as possible
- Eliminates human error of manipulating valves and controls, giving facility staff confidence the system is always operating at maximum efficiency. Advanced security only allows authorized users to enter operating and programming modes
- Automated Permeate Flush upon startup and shut down allows any scaling debris to be flushed out of the membranes and drastically extends membrane life
- Integration of networking systems allows for easy communication with other control systems
- Troubleshooting the RO systems is dramatically simplified and warns staff before problems occur

Standard PLC Features (Included)

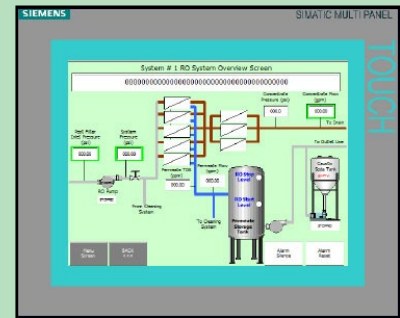
- **Touch Screen Control:** Manual control features allow operators to open valves, start and stop pumps by pressing the icon on the Touch Screen Panel display
- **Engineering and System Setup Interface:** Through the Touch Screen the alarm setpoints, efficiencies and proportional control settings are fully adjustable
- **Data Logging Features:** The system parameters are logged through the touch screen panel software and saved to an Excel file onto a secure digital card for analysis

Upgradable PLC Features (Optional)

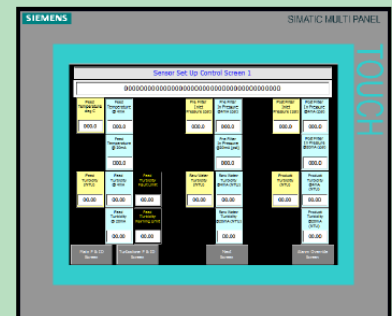
- **Advanced Data Monitoring:** Allows for configurable trending, data analysis, and development of an Excel spreadsheet to retrieve and chart data, with the capability to publish real-time and historical information to the Internet. Information can quickly troubleshoot problems, study process inefficiencies, and eliminate the time-consuming process of locating the data
- **Remote Monitoring and Control:** This feature allows access to view and control system operation from any remote location with an internet connection. Includes laptop required to communicate with system and to access real time information
- **Alarm Notification:** Alarms are configured to contact employees via cell phone or text. Alarms can be vocalized over speakers, radios, and telephones. Users can listen to and acknowledge alarms, change set points, hear exact values of variables, and operate equipment via telephone from remote locations, saving valuable time and money



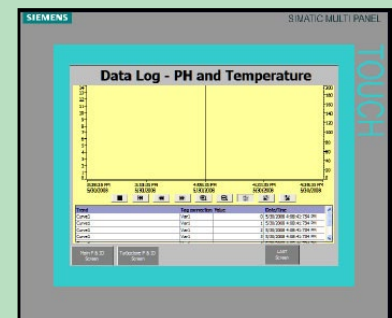
10" Siemens Color Touch Screen GUI



Touch Screen Control



Engineering and System Setup Interface



Data Logging Features